

**LEG WARMERS:**

With 5 mm (No. 4) needle and white cast on 40 sts. Close ring and work 26 rounds in K2, P2 rib. Change to short 6.50 mm (No. 3) needle and work in rounds of patt from Charts 1 and 2 and stripes as for sleeves, inc one st at beg and end of first and last round of 3rd patt from Chart 1 (with green background and red hearts), 44 sts. P4 rounds in foll colours: 1 white, 1 red, 1 green, 1 white. P1 round in red, inc one st at beg and end of round, 46 sts. P5 rounds in foll colours: 1 white, 2 green, 2 red. Cast off.

**To Make Up**

**TUNIC:**

Join cast off sts at armholes. Join edges of g.st. at Neck Band and sleeves. Join edges of g.st. at lower edge of Children's sizes. Turn hem of Ladies sizes to wrong side and slip stitch in position.

**CAP**

Join edges of g.st. at lower edge and turn to right side.

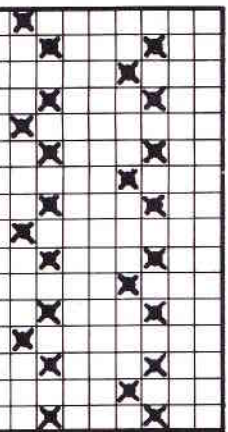


Chart 2: 10 Rows

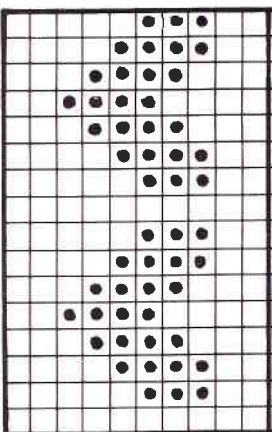
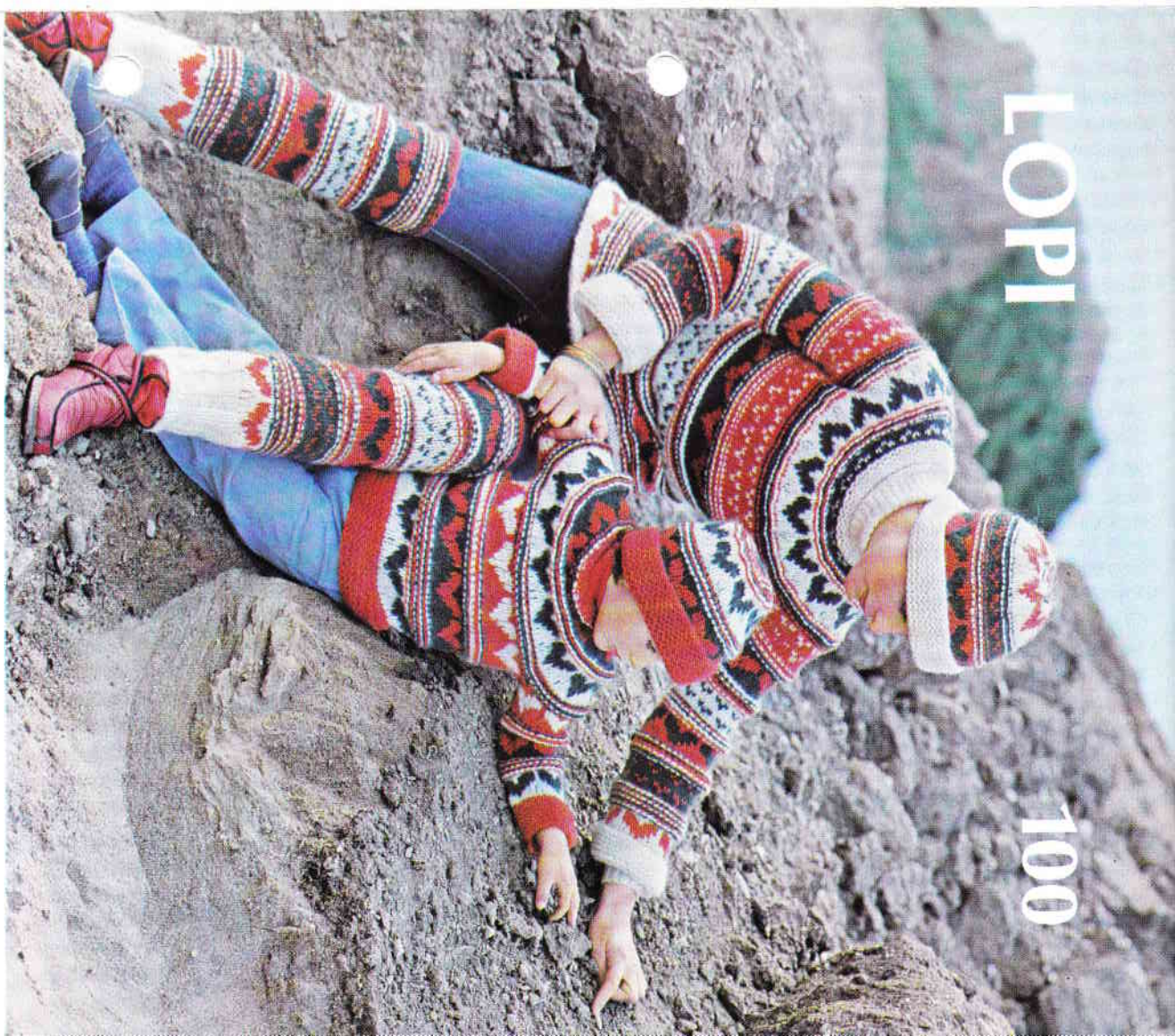


Chart 1: 10 Rows

Importers: SCOTTNORD Ltd., 242 Edmiston Dr., Glasgow



LOPI

100

ÁLAFLOSS  
of Iceland



## TUNIC, CAP AND LEGWARMERS

### Materials Required

**LoPi**  
Red (71) 300 400 400 500 500 grams  
White (51) 200 300 500 600 600 grams  
Green (75) 200 300 500 500 500 grams  
Quantities stated are for all three garments  
Circular needles 6.50 mm (No. 3) 70 and 40  
cms (28 and 16 ins long) 5 mm (No 6) 40  
cms (16 ins long)

### Measurements

**Childrens**  
sizes 4/6 years 8/10 years  
Chest 68 cms (27") 73 cms (29")  
Length at

centre back 47 cms (18½") 55 cms (21½")  
Sleeve  
(incl cuff) 33 cms (13") 43 cms (17")  
**Ladies sizes** 86 cms 92 cms 98 cms  
Chest 34" 36" 38"

Length at 61 cms 64 cms 69 cms  
centre back 24" 25½" 27"  
Sleeve 46 cms 48 cms 51 cms  
(incl cuff) 18" 18½" 20"

### Tension

14 sts and 18 rounds on 6.50 mm (No. 3)  
needle = 10 cms square. Change needle sizes  
up or down to obtain correct tension.

### Abbreviations

**K-knit:** p-purl; st(s)-stitch(es); patt-  
pattern; foll-follow(s)(ing); beg-beginning;  
g-st-garter stitch (every row **K** when  
working backwards and forwards); rem-  
remaining; rep-repeat; inc-increasing.

### CHILDREN'S SIZES

#### TUNIC

##### Back and Front

With long 6.50 mm (No. 3) needle and red  
cast on 88 (96) sts and working backwards  
and forwards as for two needles, **K**16 (18)  
rows — 8 (9) ridges g.st. Close ring and  
work in rounds of patt from Chart 1 and  
stripes as foll: **K**10 rounds from Chart 1  
with white background and green hearts,  
P6 rounds in stripes using foll colours: 1  
red, 1 green, 1 white, 1 red, 1 green, 1 white.  
**K**10 rounds from Chart 1 with green  
background and red hearts, P5 rounds in  
stripes using foll colours: 1 white, 1 red, 1  
white, 1 red, 1 green. **K**9 (10) rounds from  
Chart 1 with red background and white  
hearts.

##### Size 8/10 only:

**P**4 rounds in stripes using foll colours: 1  
green, 1 white, 1 green, 1 red, **K**9 rounds  
from Chart 1 with green background and  
white hearts.

### Both sizes:

#### Armhole:

Divide for armholes on 10th round from  
Chart 1 as follows: Keeping patt correct  
cast off first 3 sts, patt 38 (42) sts, including  
st on needle, cast off next 6 sts, patt 38 (42)  
sts including st on needle, cast off last 3 sts.  
Leave work aside.

#### Sleeves:

With short 6.50 mm (No. 3) needle and red,  
cast on 40 sts and, working backwards and  
forwards, **K**20 (24) rows — 10 (12) ridges  
g.st. Close ring and work same number of  
rounds in patt from Chart 1 and stripes as  
for Back and Front.

#### Armhole:

Cast off first and last 3 sts of 10th round  
from Chart 1, 34 sts.

#### Yoke:

Place all sts on long 6.50 mm (No. 3) needle  
in correct order, i.e. first 38 (42) sts from  
Back and Front, 34 sts from Sleeve, next 38  
(42) sts from Back and Front and 34 sts  
from second Sleeve, 144 (152) sts. **P**4  
rounds using foll colours: 1 green, 1 white,  
1 green, 1 red. Slip last 3 sts of round on to  
left hand needle and mark this point for beg  
of rounds, Dec 24 sts evenly across last  
round, **K**10 rounds from Chart 1 with  
white background and green hearts, 120  
(128) sts. **P**3 rounds using foll colours: 1  
red, 1 green, 1 white, Dec 24 sts evenly  
across first and last rounds, **K**10 rounds  
from Chart 1 with green background and  
red hearts, 72 (80) sts. **P**1 round in red.  
With short 6.50 mm (No. 3) needle **P**1  
round in white, dec, 20 (24) sts evenly  
across round, 52 (56) sts.

#### Neckband:

Using red only and working backwards  
and forwards, dec 2 (4) sts evenly across  
first row, **K**7 (9) rows — 3 (4) ridges g.st.  
Cast off on wrong side.

#### CAP

With short 6.50 mm (No. 3) needle and red  
cast on 56 sts, and working backwards and  
forwards, **K**20 rows — 10 ridges g.st. Close  
ring and work in rounds as foll: **K**10 rounds  
from Chart 1 with green background and  
red hearts, **P**3 rounds in stripes using foll  
colours: 1 white, 1 red, 1 green, **K**10 rounds  
from Chart 1 with white background and  
green hearts, dec 14 sts evenly across last  
round, 42 sts, **P**1 round in red, **P**1 round in  
green, dec 14 sts evenly across round, 28  
sts. Rep the last 2 rounds, 14 sts, **P**1 round  
in green, Cut yarn and thread through rem  
sts. Fasten off.

Copying of photograph and text is  
forbidden without a written authorisation.  
It is forbidden to use this design or any part  
of it for professional or commercial  
purposes.

### YOKE:

Place all sts on long 6.50 mm (No. 3) in  
correct order, i.e. first 48 (50, 54) sts from  
Back and Front, 32 (38, 38) sts from Sleeve,  
next 48 (50, 54) sts from Back and Front  
and 32 (38, 38) sts from second sleeve, 160  
(176, 184) sts. Slip last 4 (5, 5) sts of round  
on to left hand needle and mark this point  
for beg of rounds, **K**10 rounds from Chart  
2 with red ground and white dots, **P**4  
rounds in foll colours: 2 green, 1 white, 1  
red, Dec 32 sts evenly across 1 st and 9th  
rounds, **K**10 rounds from Chart 1, with  
white background and green hearts 96  
(112, 120) sts, **P**2 rounds in foll colours: 1  
red, 1 green, **P**1 round in white, dec 24 sts  
evenly across round, 72 (88, 96) sts, **K**5 (10,  
10) rounds from Chart 2 with green  
background and white dots, dec 14 (24, 24)  
sts evenly across last round, 58 (64, 72) sts.

#### Neckband:

With short 6.50 mm (No. 3) needle and  
white only, working backwards and  
forwards, dec 0 (4, 12) sts across first row,  
**K**7 (9, 9) rows — 3 (4, 4) ridges g.st. Cast off  
on wrong side.

#### CAP:

With short 6.50 mm (No. 3) needle and  
white cast on 56 sts and, working  
backwards and forwards, **K**24 rows — 12  
ridges g.st. Close ring and work in rounds  
as foll: **K**10 rounds from Chart 1 with red  
background and green hearts, **P**3 rounds in  
stripes using foll colours: 1 white, 1 green, 1  
red, **K**2nd to 5th rounds from Chart 2 with  
green background and red dots, **P**1 round  
in white and 1 round in green, **K**8 rounds  
from Chart 1 with white background and  
red hearts With white, dec 14 sts evenly  
across first round, **K**2 rounds, 42 sts, **P**1  
round in green, dec 14 sts evenly across  
round, 28 sts, **P**1 round in red, Rep last 2  
rounds, 14 sts, Cut yarn and thread  
through rem sts. Fasten off.

### LADIES SIZES

#### TUNIC

##### Back and Front:

With long 6.50 mm (No. 3) needle and  
white cast on 112 (120, 128) sts. Close ring  
and **K**6 rounds, **P**1 round (chemline). Work  
in rounds of patt from Charts 1 and 2  
stripes as foll: **K**10 rounds from Chart 1  
with white background and red hearts, **P**3  
rounds in foll colours: 1 green, 1 red, 1  
white.

Rep the last 3 rounds, **K**10 rounds from  
Chart 2 with green background and red  
dots, **P**4 rounds in foll colours: 1 white, 1  
red, 1 green, 1 white, **K**10 rounds from  
Chart 1 with red background and green  
hearts, **P**6 rounds in foll colours: 2 white, 2  
green, 2 red.

##### 38" size only: Rep the last 6 rounds

**All sizes:** **K**10 rounds from Chart 2 with  
white background and green dots, **P**6  
rounds in foll colours: 2 red, 2 green, 2  
white, **K**10 rounds from Chart 1 with green  
background and red hearts, **P**3 rounds in  
foll colours: 1 white 2 red.

**Armhole:** Using white divide for armholes  
as foll: **Next round:** Cast off 4 (5, 5) sts, **P**8  
(50, 54) sts including st on needle, cast off 8  
(10, 10) sts, **P**48 (50, 54) sts including st on  
needle, cast off 4 (5, 5) sts. Leave work  
aside.

#### SLEEVES

With short 6.50 mm (No. 3) needle and  
white cast on 40 (48, 48) sts and, working  
backwards and forwards as for two  
needles, **K**22, (24, 24) rows — 11 (12, 12)  
ridges g.st. Close ring and work same  
number of rounds in patt from Charts 1  
and 2 and stripes as for Back and Front.

**Armhole:** Casting off first and last 4 (5, 5)  
sts for armhole, **P**1 round in white, 32 (38,  
38) sts.