



7 Birki

MATERIALS

Létt-Lopi • 50 g balls

M	0054:	4-5-5-6
A	9418:	1-1-2-2
B	9427:	1-1-1-1

3 3/4 mm (Old UK 9) (US 5)
twin pin, 60 cm.
5 mm (Old UK 6) (US 8)
twin pin, 60 cm.
3 3/4 mm double pointed needles.
5 mm double pointed needles.
Stitch holders.

Read Helpful Information on page 3.

TENSION

18 sts and 24 rows to 10 cm measured
over st st using 5 mm needles.

Note: Body and sleeves are worked in
the round from lower edge to

SIZES, to fit height:	110	122	134	140	cm
	43 1/4	48	52 3/4	55	in

Finished measurements

Chest:	80	84	89	92	cm
	31 1/2	33	35	36 1/4	in
Length to centre front neck edge:	42	46	50	54	cm
	16 1/2	18	19 3/4	21 1/4	in
Sleeve length to underarm:	24	28	32	34	cm
	9 1/2	11	12 1/2	13 1/2	in

underarms. Body and sleeves are then
joined and yoke is worked in the round
over entire sweater.

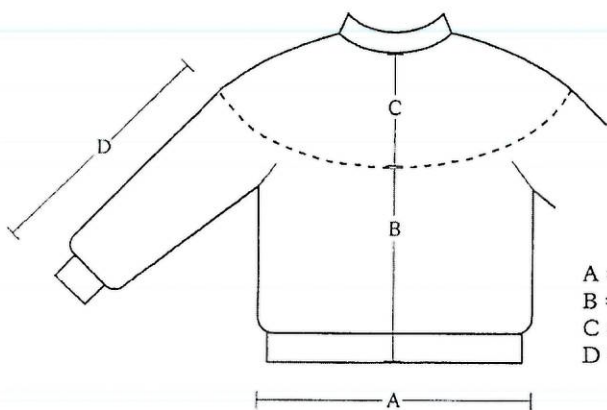
BODY

Cast on 132(140:144:152)sts,
using 3 3/4 mm twin pin and M. Join
into a circle and work in
K2, P2 rib as folls:
Work 3 rnds: *K2, using A, P2,
using M*.
Work 3 rnds: *K2, using B, P2,
using M*.
Work 3 rnds: *K2, using A, P2,
using M*.
Work 1 rnd: Using M, *K2, P2*.

Change to 5 mm twin pin. K around
and inc 12(12:16:14)sts evenly spaced
on rnd, 144(152:160:166)sts.
Work in st st (K each rnd) until work
measures 25(27:30:33)cm from cast
on edge, do not work last 5(6:6:6)sts
of last rnd. Do not break yarn.

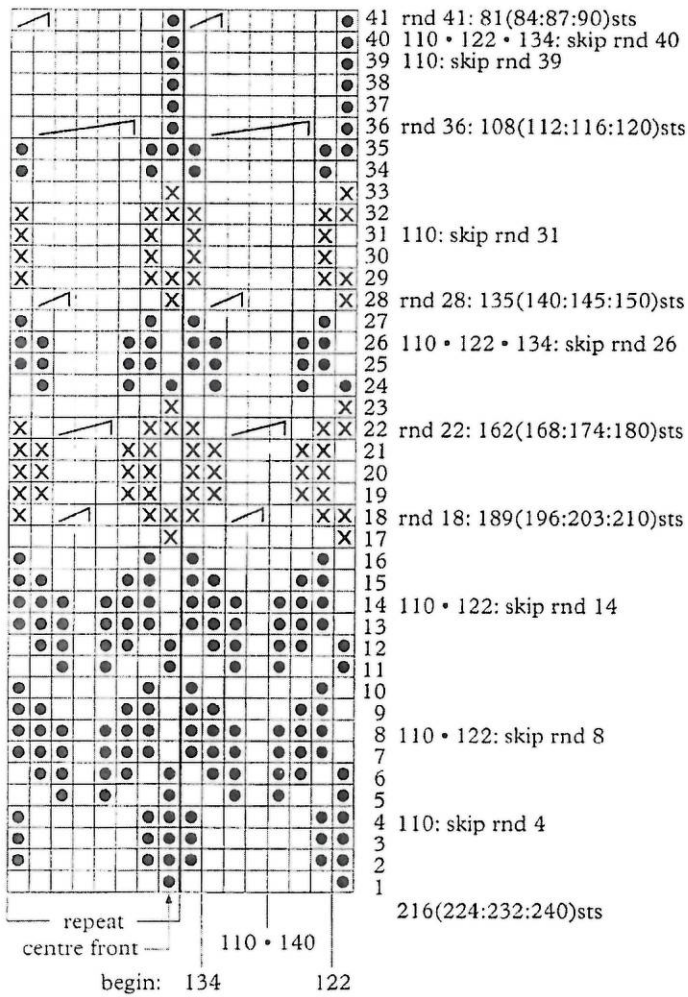
SLEEVES (both alike)

Cast on 28(32:32:36)sts, using
3 3/4 mm double pointed needles and
M. Join into a circle and work in
K2, P2 rib as folls:
Work 3 rnds: *K2, using A, P2,
using M*.
Work 3 rnds: *K2, using B, P2,
using M*.
Work 3 rnds: *K2, using A, P2,
using M*.
Work 1 rnd: Using M, *K2, P2*.
Change to 5 mm double pointed
needles. K around and inc
10(10:10:11)sts evenly spaced on rnd,
38(42:42:47)sts.
Work in st st and at the same time inc
1 st at beg and end of every
4th(5th:6th:6th)rnd 9(8:9:7)times to
56(58:60:61)sts.
Cont without further shaping until
work measures 24(28:32:34)cm from
cast on edge.

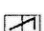


A = 40(42:44,5:46)cm
B = 25(27:30:33)cm
C = 17(19:20:21)cm
D = 24(28:32:34)cm

Chart



Key

- 0054  K2tog
- 9418 □ no st
- ⊗ 9427

Work 3 rnds: *K2, using B, P2, using M*.

Work 3 rnds: *K2, using A, P2, using M*.

Work 1 rnd: Using M, *K2, P2*.
 Using M, cast off in rib.

MAKING UP

Weave in any loose ends.
 Graft underarm sts tog.

Sl last 5(6:6:6)sts and first 5(5:6:6)sts of rnd to st holder for underarm.

YOKE

Join sleeves to body as folls:

Sl last 5(6:6:6)sts and first 5(5:6:6)sts of rnd of body to st holder. Using 5 mm twin pin and M,
 K46(47:48:49) across sleeve 2,
 K61(65:67:71) across front,
 sl next 10(11:12:12)sts of body to st holder,
 K46(47:48:49) across sleeve 1,
 K63(65:69:71) across back,

216(224:232:240)sts.

Work in st st patt from Chart, change to double pointed needles when rnd gets tighter,
 81(84:87:90)sts.

NECKBAND

Change to 3 3/4 mm double pointed needles and M. K around and dec 17(16:19:18)sts evenly spaced on rnd,
 64(68:68:72)sts.
 Cont in K2, P2 rib as folls:
 Work 3 rnds: *K2, using A, P2, using M*.