

## Létt-Lopi vest

<u>SIZES</u>	<u>S</u>	<u>(M)</u>	<u>L</u>	<u>(XL)</u>
Chest:	82	(87)	91	(96) cm
Length to underarm:	31	(32)	33	(34) cm

### MATERIALS

#### Létt-Lopi - 50 g balls

A <b>0059</b> black	4 (4)	5 (5)		
B <b>0054</b> ash	1 (1)	1 (1)		
C <b>9418</b> stone blue	1 (1)	1 (1)		

4½ mm circular needles 40 and 60-80 cm

3½ mm circular needles 40 and 60-80 cm

### GAUGE

18 sts and 24 rows = 10 x 10 cm measured over St st using 4½ mm needles.

Check gauge and adjust needle size if necessary.

### NOTE

Body is worked in the round from lower edge to underarms, then worked back and forth, finally yoke is worked in the round. Pattern and dec are worked from chart.

Round begins and ends at left side of body but on yoke round begins and ends on left side of back.

**Moss stitch:** Row 1: \*k1, p1\* to end. Row 2: p the k sts, k the p sts.

Rep row 1 and 2.

### BODY

Cast on 148 (156) 164 (172) sts with A using 3½ mm circular needle. Join in a circle and work 5 rnd in moss stitch. Change to 4½ mm circular needle and work in St st.

Place markers on either side of body

Work 5 cm, dec 2 sts on each side of marker (SKP, k2tog). Work 5 cm and dec at each marker as before, then work another 5 cm and dec 2 sts as before => 136 (144) 152 (160) sts.

Work 5 cm, inc 2 sts (Lifted inc: K into right loop of st below next st, k1. K next st, k into left loop of st below st just knitted) on each side of marker. Work 5 cm and inc as before, work further 5 cm and inc again => 148 (156) 164 (172) sts. Work without further shaping until body measures 31 (32) 33 (34) cm from cast on edge. Do not work last 5 (6) 6 (7) sts in last rnd.

### YOKE

Cast of 10 (11) 12 (13) sts for left underarm. Work front 64 (67) 70 (73) sts. Cast of 10 (11) 12 (13) sts for right underarm. Work back 64 (67) 70 (73) sts. Work back and forth in St st, 4 rows for back and front. *Join in a circle:* Cast on 48 (49) 50 (51) sts for left shoulder, k front, cast on 48 (49) 50 (51) sts for right shoulder, k back => 224 (232) 240 (248) sts. Work patt and dec's from **chart** as indicated. Change to shorter circular needle when necessary => 84 (87) 90 (93) sts.

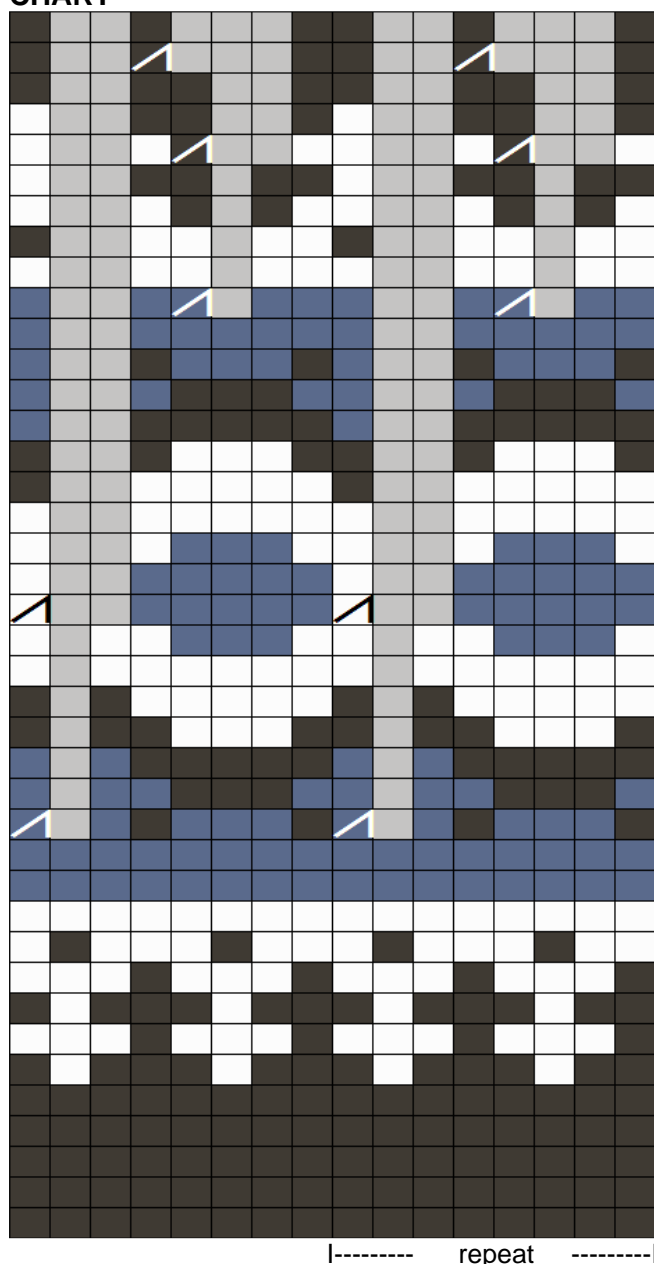
### NECKBAND

Change to 3½ mm needle, k 1 rnd and dec evenly spaced 16 (17) 18 (19) sts => 68 (70) 72 (74) sts. Work 4 rnds moss st. Bind off loosely in k1, p1 rib.

### FINISHING

Weave in loose ends. Rinse by hand in lukewarm water and lay flat to dry.

# CHART



40 skip rnd size S (M) L  
**39** rnd 84 (87) 90 (93) sts  
 38  
 37  
**36** rnd 112 (116) 120 (124) sts  
 35  
 34  
 33  
 32  
**31** rnd 140 (145) 150 (155) sts  
 30 skip rnd size S (M) L  
 29  
 28  
 27  
 26  
 25  
 24 skip rnd size S (M) L  
 23  
 22  
**21** rnd 168 (174) 180 (186) sts  
 20  
 19 skip rnd size S (M) L  
 18  
 17  
 16  
 15  
**14** rnd 196 (203) 210 (217) sts  
 13 skip rnd size S (M) L  
 12  
 11  
 10  
 9  
 8  
 7  
 6  
 5  
 4  
 3  
 2  
**1** rnd 224 (232) 240 (248) sts

## Key

- = A 0059
- = B 0054
- = C 9418
- = knit 2 together
- = no stitch

Design: **Védís Jónsdóttir** for [www.istex.is](http://www.istex.is)